

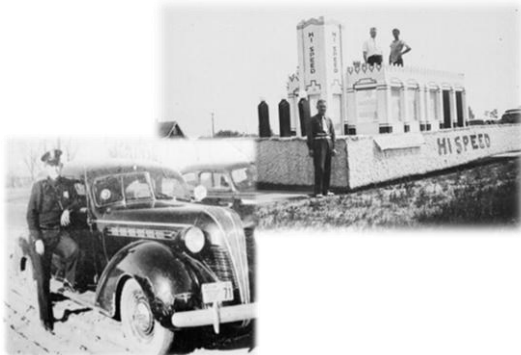
WHAT is Portfolio?

SirsiDynix Portfolio is a library tool that allows viewing of historic photographs, newspaper collections, and historic audio collections through the library catalog. This program facilitates the sharing, searching and discovery of library items through the convenience of a user's home computer.

WHERE do the images come from?

The materials are uploaded by local libraries and historical groups. Currently there are almost 10,000 entries in *Portfolio* and more are being added.

Libraries, Historical Societies, and Archives are contributing to the database at an ever expanding rate – so check back frequently for new additions.



HOW do I view these materials?

1. Log on to a computer and go to the library home page: rosevillelibrary.org
2. Select **Catalog** along the left hand side bar.
3. Log in using your Library Card and pin number.
4. In the first drop down box select: **LOCAL HISTORY SEARCH**(this replaces EVERYTHING)
5. In the second drop-down box leave the default selection: **ALL FIELDS**
6. In the third box type in your search (ex. Roseville fire department)
7. Click on **SEARCH**.

For the example search, the images and entries will appear like the one below:



Roseville Fire Department NA

Roseville Fire Department

Jpeg Images



<http://sbrb.ent.sirsi.net/cclient/rsv/search/asset/11502?qu=roseville+fire+department&te=ASSET>

Excerpt:

Roseville Fire Department filming a WJBK newsreel

Working with the entry:

- You can run the cursor over the photo and enlarge the image for better viewing.
- You can click the cursor on the **TITLE** and view the entry – this will give you a more detailed explanation of the image.
- While in the entry you can click on the **view asset** or **URL for file** link and see a larger image. Return to the search by closing the box or clicking on the back arrow.
- Documents or recorded oral histories can be searched the same way. You can listen to a streaming audio of the history or view the document by clicking on **view asset** or **URL for file link**

Copying images:

- Photo reproductions and rights to publish may be obtained through the participating libraries and historical societies based on the policies of each organization.

Tip:

- Write down the **identifier code**, from the entry details, of images you wish to revisit. Use the **identifier code** when searching for a specific item.

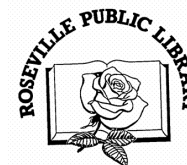
Getting Started with
Local History
Search

Using the Library Catalogue



Last updated 11/26/2013

rosevillelibrary.org



586-445-5407

rosevillelibrary.org